

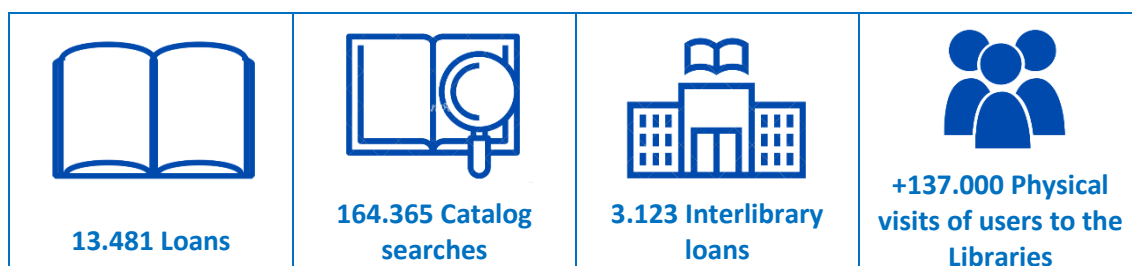
# The role of IE Library in supporting research.

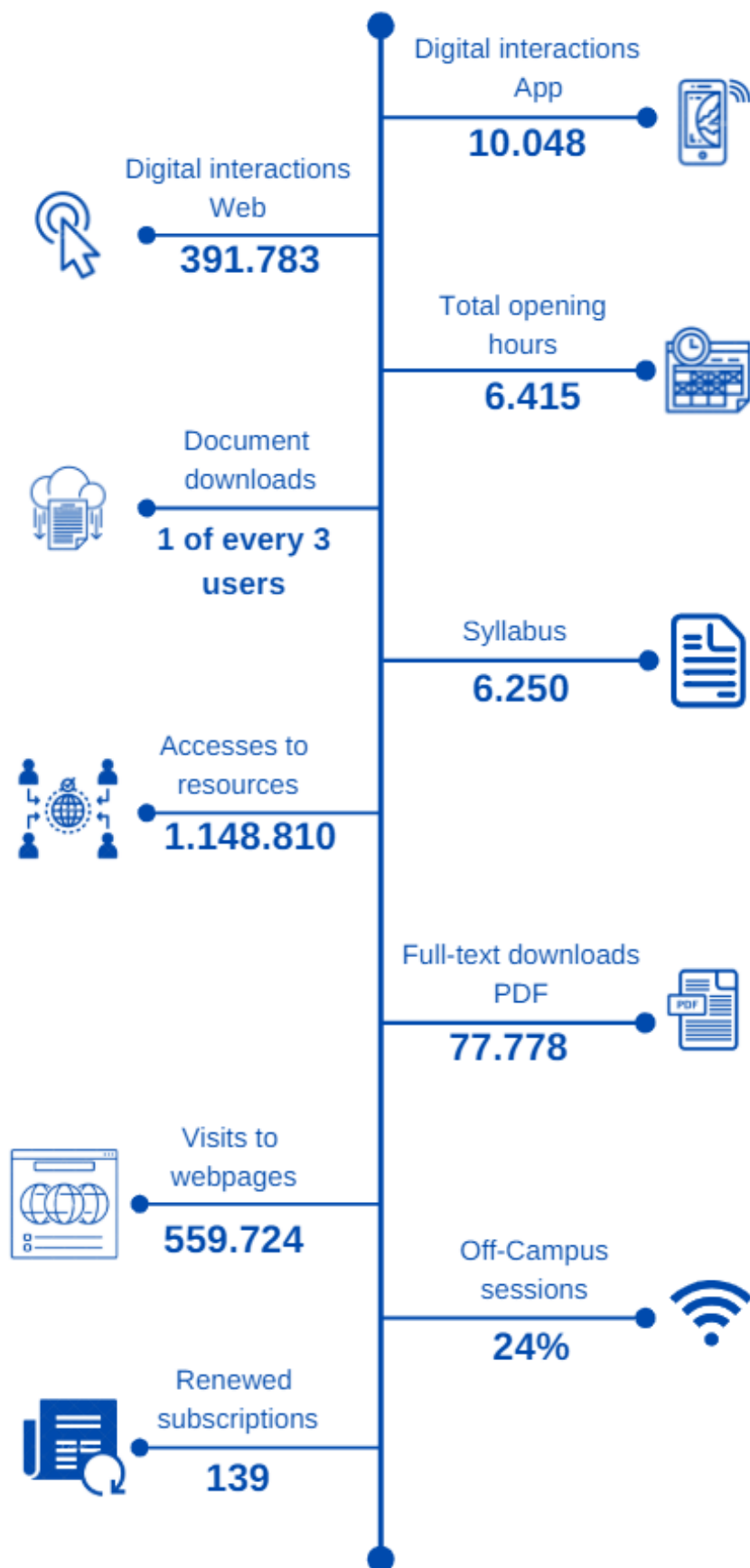
## ➤ Mission

Empower the IE community to discover, use and create knowledge

## ➤ Vision

A world of equitable access to information and resources where everyone is inspired to achieve their goals.





One of the objectives in the IE Library's strategic plan is to expand the integration of the Library into researchers' research life cycles and the specific activities that the Library is bringing to teachers and students. It is described as what is understood as "research life cycle"; and it highlights some of them carried out to ensure that cutting-edge services and resources are available when and where students and faculty need them, whether they are for their inspiration, handling, documentation, authentication, dissemination, preservation or education.

Many of the activities carried out related to the research life cycle are firmly rooted on our commitment with the equitable access to information. We believe that the research done by our institution, often with the support of regional, state – among others – as well as private funding; must be available not only for other academics but for the managers of the policy making and the public in general.

We are also feeding the archive and repository of all the IE Applied Research, which will improve our capacity of leading and harbor the faculty data sets that can be downloaded and reused by others, globally. We are enhancing our ability of digitalization for making even more open our unique content, and we are building an ecosystem with open technology and software in which academics will be able to explore this collections.

University research follows a trackable path, often called the "research life cycle": generating ideas, reviewing published studies, collecting data, synthesizing information, testing the hypothesis, writing or presenting findings and publishing.

It is essential that researchers in the IE Community have access to the widest range of information resources. Providing access to digital collections of books and media, articles, journals and databases, maps and special collections of the University Library is vital for the Library's ability to support the researcher from the earliest stage of exploration of ideas.

For researchers IE Library provides:

Services and products.

- Specific spaces for creating, co-creation and knowledge sharing.
- Computers with specialized software.
- Weekends and extended schedules.
- Exhibitions with creations of researchers, students, etc.
- Spanish National Library card.
- Global alliances and cooperation, access to any library globally for research purposes. Reception of worldwide researchers in IE Library spaces, access to research resources in facilities to international researchers, full text access to all researchers at a global level in order to open science through our catalog (12 million open access full text records).

Regarding services for researchers, we have:

Purchases forms (purchases through National Consortia, licenses that benefit the use and exploitation of information), loans, obtaining of documents, data and interlibrary loan services, user training, bibliographic news, reprography and printing, Internet connection and WI-FI (Eudoram).

Regarding e-resources for researchers:

A selection of the most prominent Databases and other resources worldwide. E-books. E-journals, electronic resource guides, discovery tools, reference management and remote access.

IE Library supports the Research life cycle along with the IE Research Office, through key services such as: copyright services, data management, data visualization, digital humanities, interlibrary loan, publishing and repository services, research impact and library orientation during the following four phases:



1. Planning research
2. Conducting research
3. Publishing research
4. Increasing impact of research.

## Research life cycle

---

### ***Planning Research***

Research consultations  
Author's rights consultations  
Consulting on Management of Research Outputs  
Data Management Plan consultations  
Finding grants (***Carried out along with other IE departments***)

---

### ***Conducting Research***

Information and Data Literacy  
Acquiring Library Resources for Research  
Using Databases and other Library resources  
Access to materials (books, articles, etc.) beyond IE Library  
Citation Management Support  
Using digital methods and tools

---

### ***Increasing impact of research***

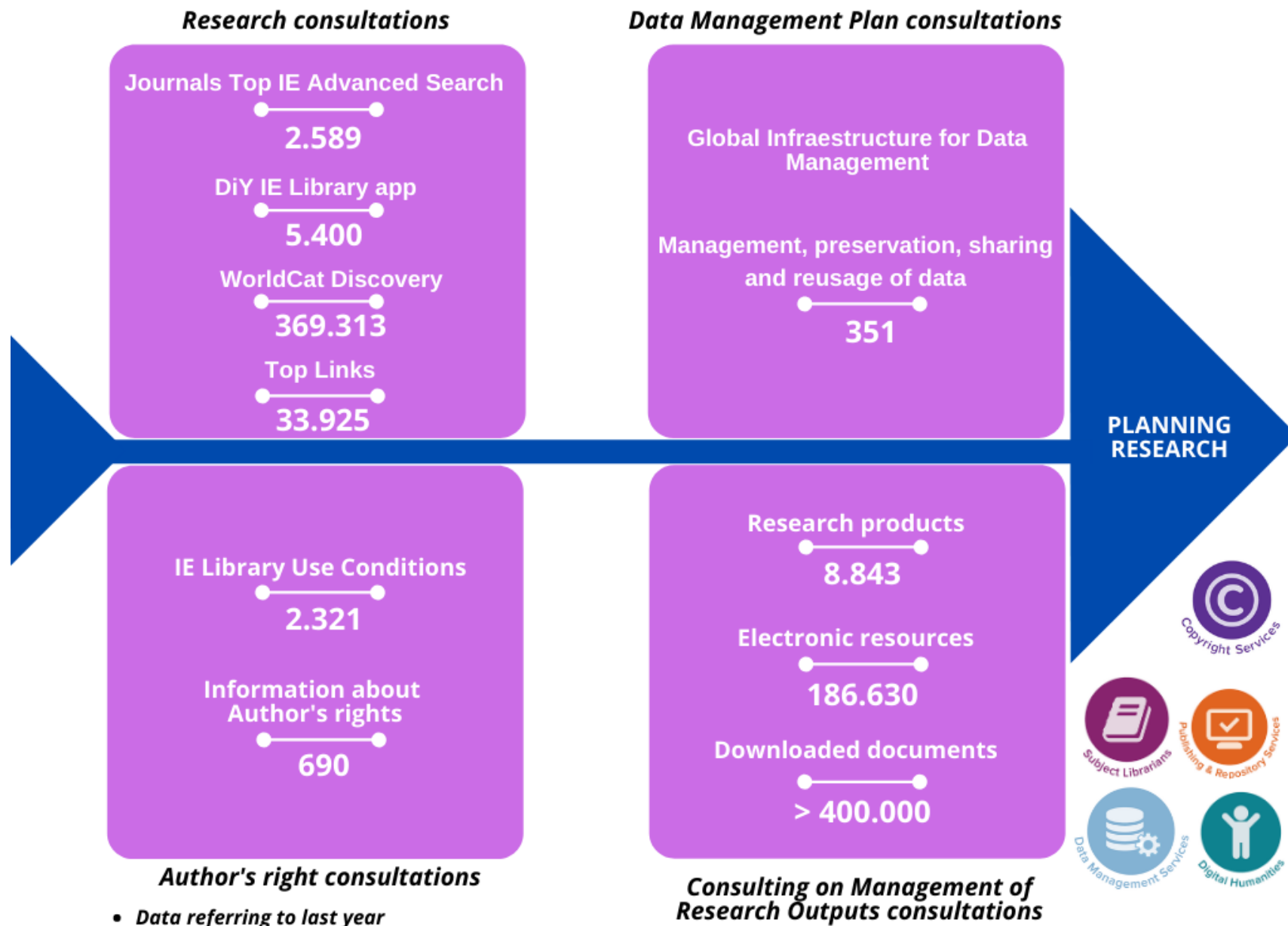
Providing Open Access Solutions  
Measuring Citations and Usage  
Strategizing Methods for Maximizing a Research Portfolio  
Sharing data at IE Library and Beyond  
Promoting Digital Projects and Research

---

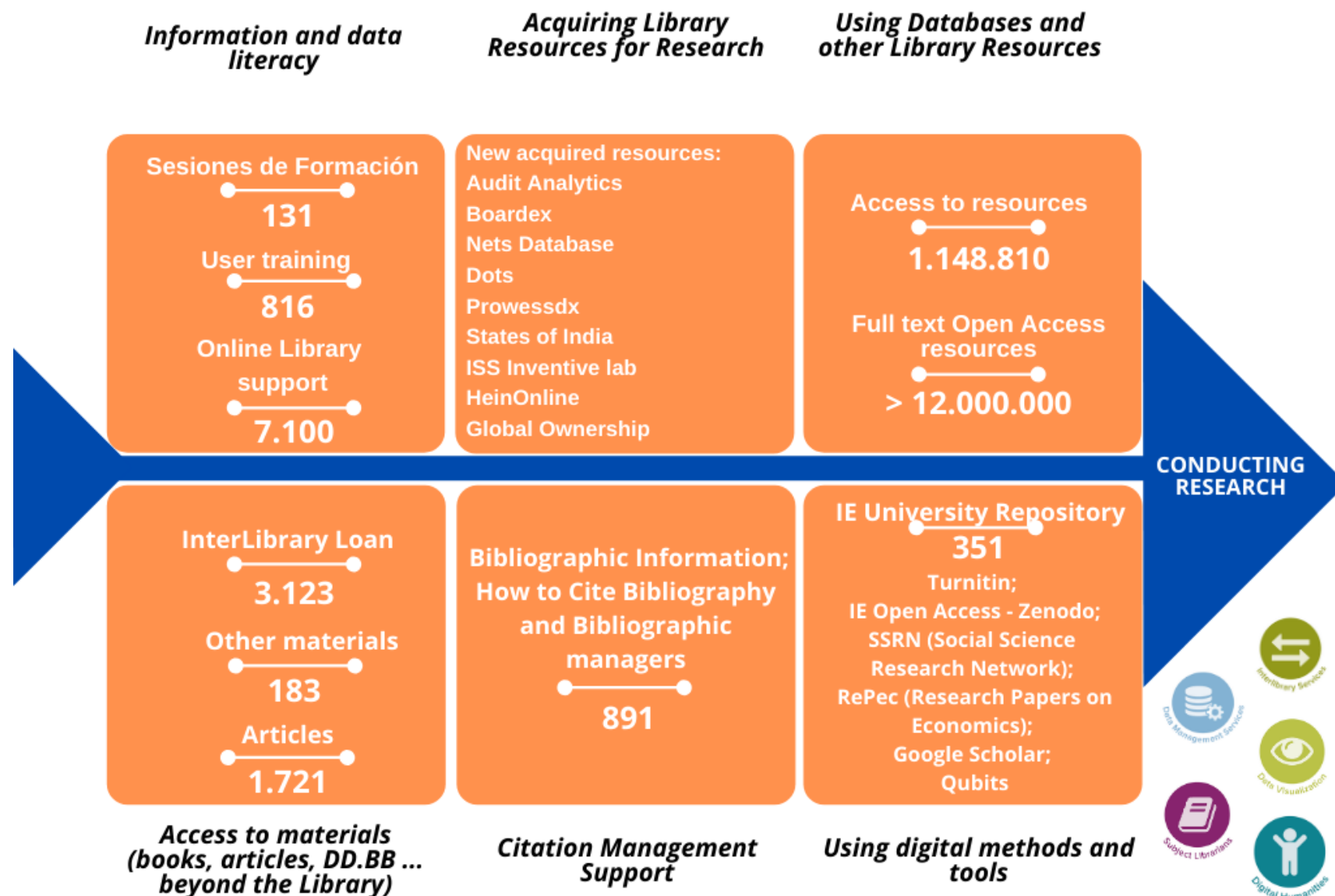
### ***Publishing Research***

Rights (Copyright services). Copyright. Your rights. Permissions. Finding, Evaluating & Using Content.  
Where to publish. Identifying Appropriate Journals for Publication. Open Access Publishing Options.  
Research Impact. Open Source Digital Publishing Platforms.  
Impacto de la Investigación. Plataformas de Fuente Abierta, para Publicar Digitalmente.  
Access. Complying with Funder Mandates for Open Access. Archiving Research in the Knowledge Bank. Journal and Conference Publishing

---



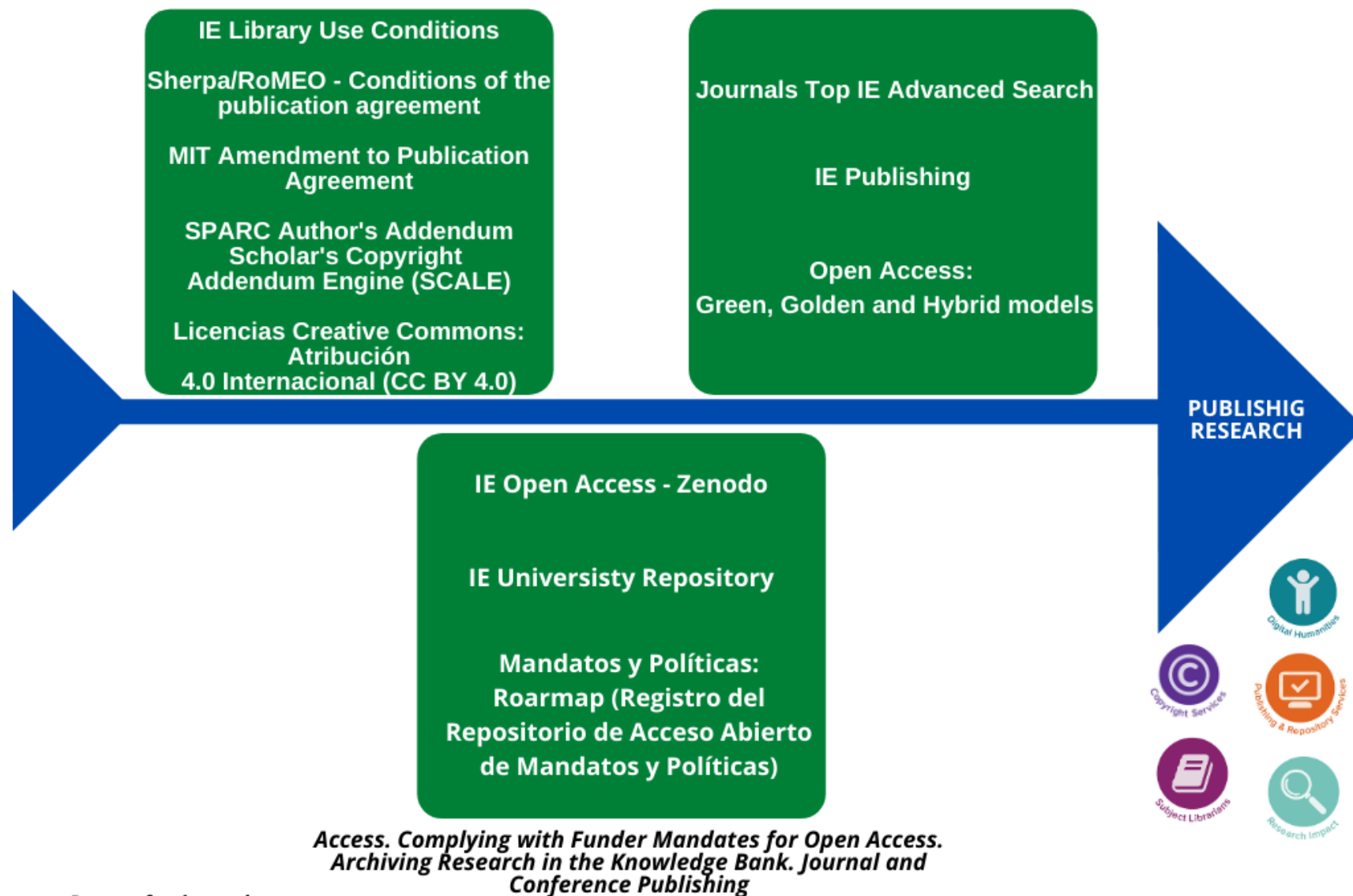




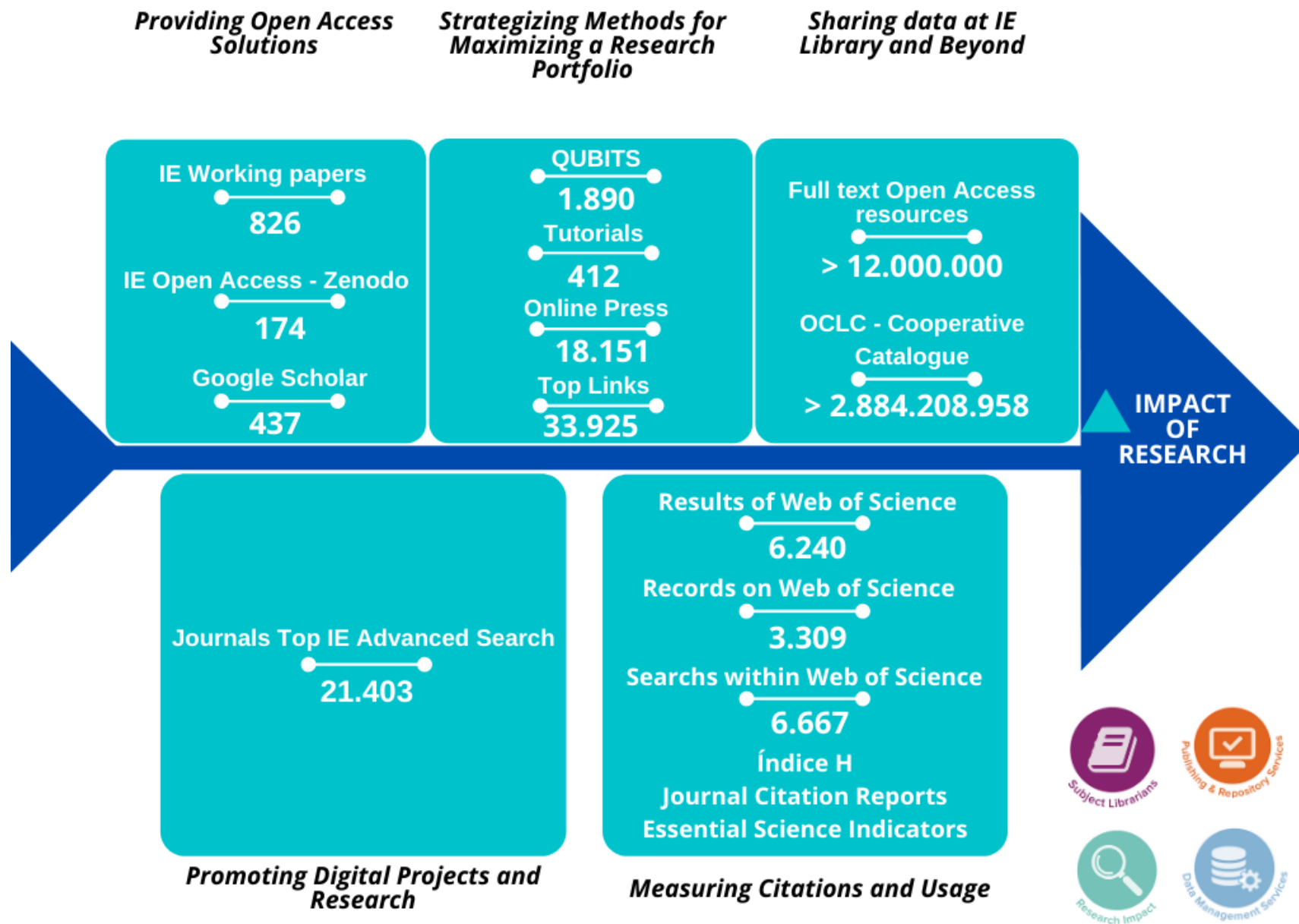
- Data referring to last year

*Rights (Copyright services). Copyright. Your rights. Permissions. Finding, Evaluating & Using Content.*

*Where to publish. Identifying Appropriate Journals for Publication. Open Access Publishing Options. Research Impact. Open Source Digital Publishing Platforms*



- Data referring to last year



• Data referring to last year